

Annabel Osberg

Future Fair NYC May 1 - 4, 2024

Drawing is the foundation of my artistic practice. Nearly all of my paintings originate in my sketchbooks. Pencil or pen on paper is my rawest way of processing the world around me, almost like a diary. I sketch nearly every day—sometimes from life; other times, from memory; often, I doodle whatever comes to mind, à la Surrealist automatism.

The 25 pieces here were selected from copious stacks of drawing pads I've filled over the past several years. A few of these, including my "Study for 'Uprooted,'" were ideas for paintings that have already been executed; others might eventually end up in some form on future canvases. Many of them straightforwardly crystallize memories, dreams, or things I've seen, such as a total solar eclipse or a mountain near my house. All offer intimate glimpses into my mind and artistic process.



Annabel Osberg is an artist and critic based in Southern California. Her art addresses the surreality of life in the digital era, posing existential questions about what it means to be human in a world increasingly defined by advanced technology. With shallow, disjunctive spatiality and luminous hues, her paintings often evoke vacuous onscreen realms populated by sundered hybrids of flesh, blood, and nature. Her work has been included in recent exhibitions at the University of La Verne and Ladies' Room in Los Angeles; and in July will be shown at Serious Topics.

In addition to her studio practice, Osberg regularly contributes to Artforum; and has penned hundreds of articles about art and culture for other publications including Art in America, the Financial Times; The Huffington Post; The Brooklyn Rail; AEQAI; and Artillery, where she served as an editor and weekly columnist. She has also authored numerous monographs and catalog essays.

Osberg graduated summa cum laude from California State University, San Bernardino with a BA in studio art, attended Yale, and received her MFA in painting from Boston University.



Annabel Osberg

Untitled (Cloud Study 1) 2014
graphite and prismacolor on paper
9 x 12 inches
\$500



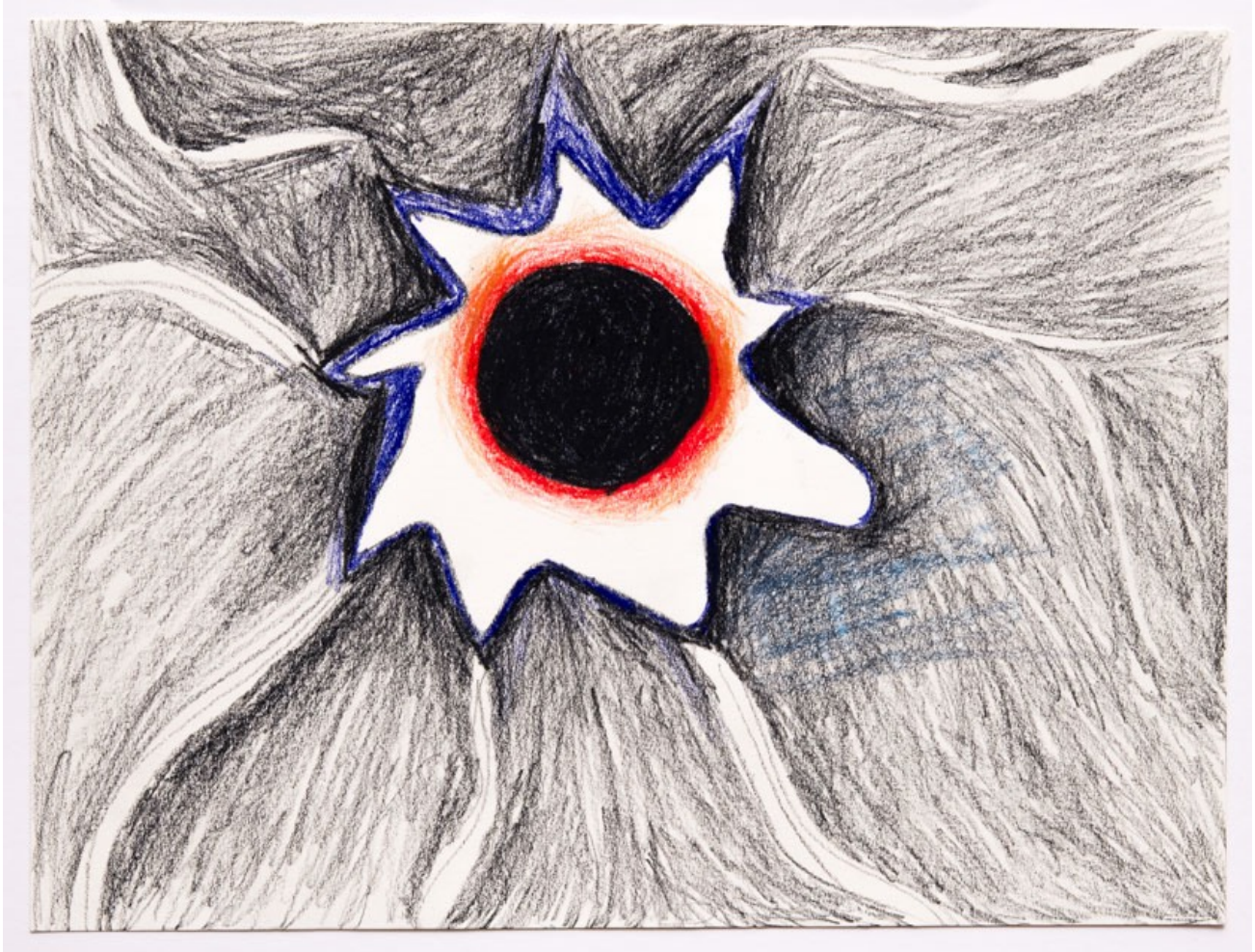
Annabel Osberg

Seascape Study 2017

graphite and prismacolor on paper

9 x 12 inches

\$500



Annabel Osberg

Totality Solar Eclipse Caspar WY 2017

graphite and prismacolor on paper

9 x 12 inches

\$500



Annabel Osberg

Flaming Hands 2019

graphite and prismacolor on paper

9 x 12 inches

\$500



Annabel Osberg

Headfans 2019

graphite on paper

9 x 12 inches

\$500



Annabel Osberg

Injury at My 5th Birthday Party 2019

graphite on paper

9 x 12 inches

\$500



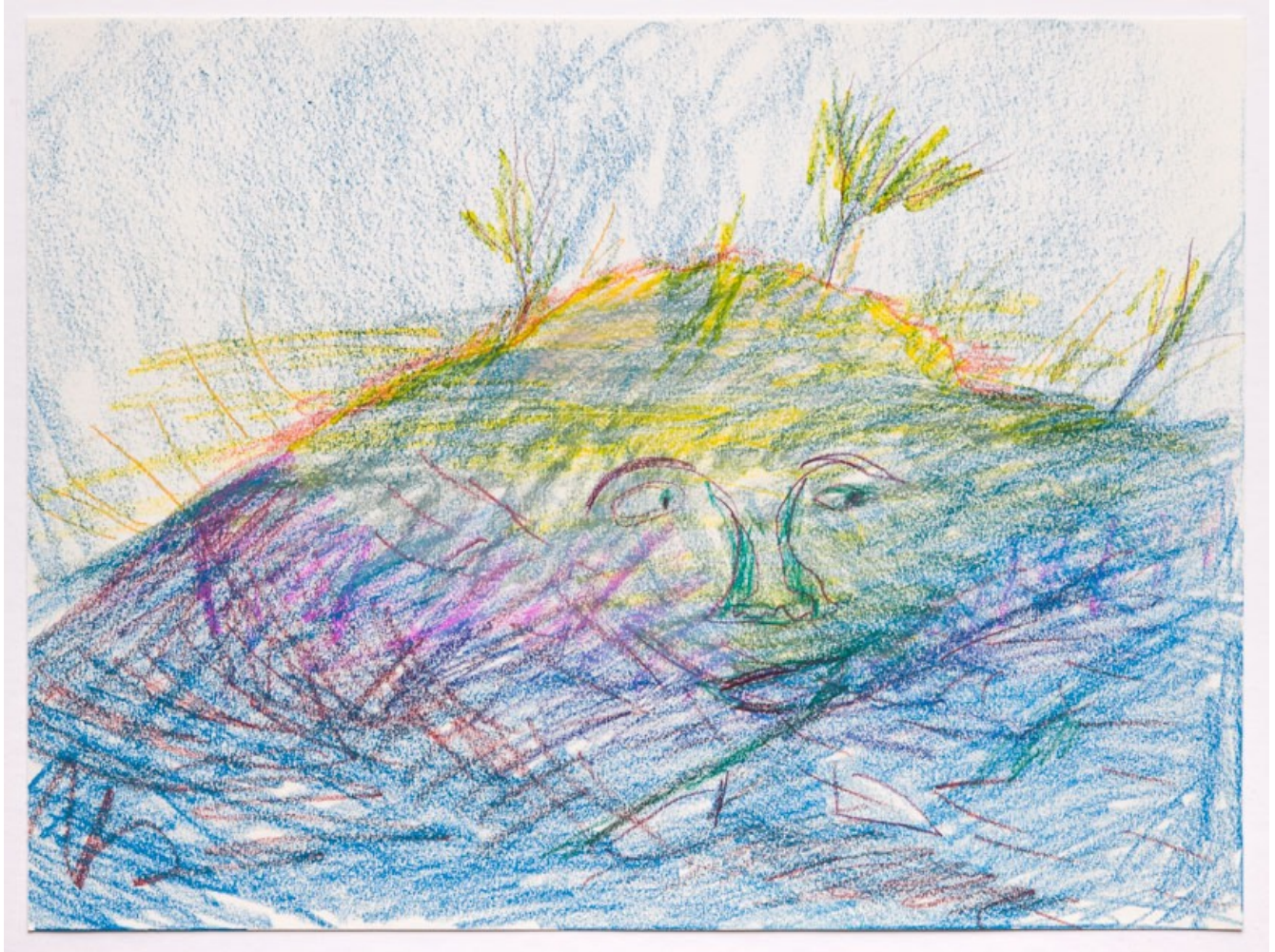
Annabel Osberg

Landface 2019

graphite and prismacolor on paper

9 x 12 inches

\$500



Annabel Osberg

Mountainface 2019

graphite and prismacolor on paper

9 x 12 inches

\$500



Annabel Osberg

Untitled (Spike Study) 2014

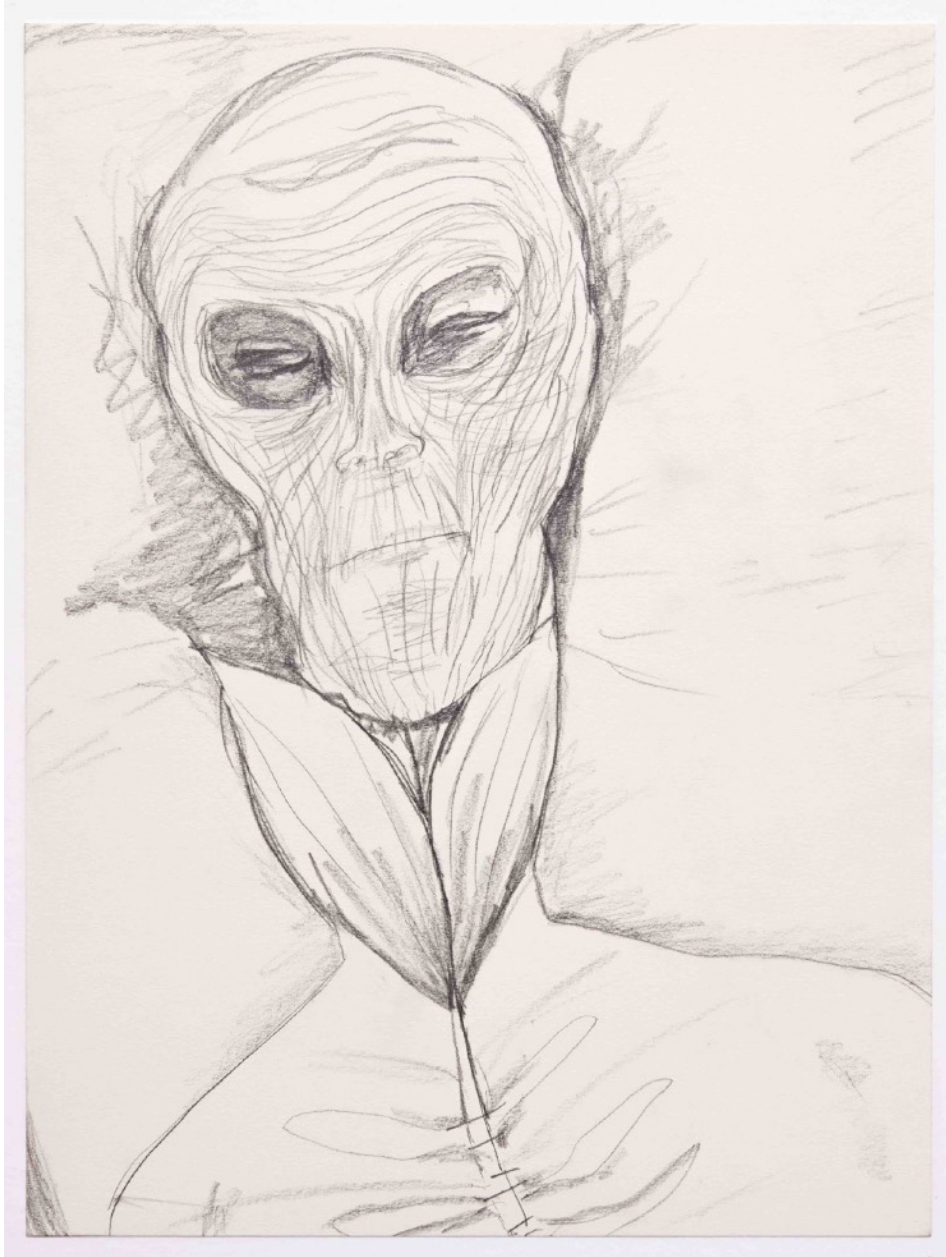
graphite and prismacolor on paper

9 x 12 inches

\$500



Annabel Osberg
Sunny Peak 2020
prismacolor on paper
9 x 12 inches
\$500



Annabel Osberg

Bud 2021

graphite on paper

12 x 9 inches

\$500



Annabel Osberg

Untitled (divided desert) 2021

graphite and prismacolor on paper

9 x 12 inches

\$500



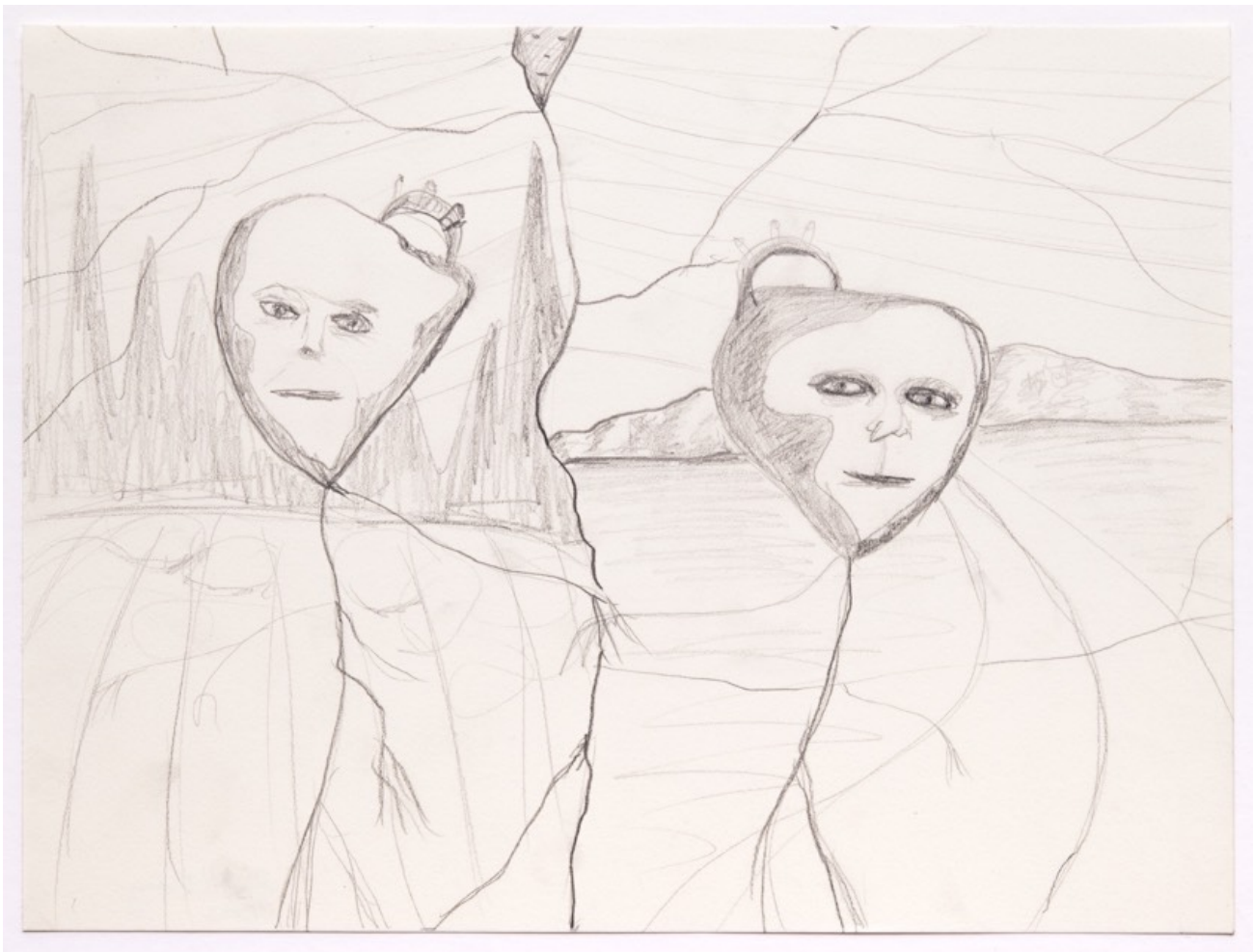
Annabel Osberg

Untitled (Starry Evening) 2021

prismacolor on paper

9 x 12 inches

\$500



Annabel Osberg

Together Apart 2023

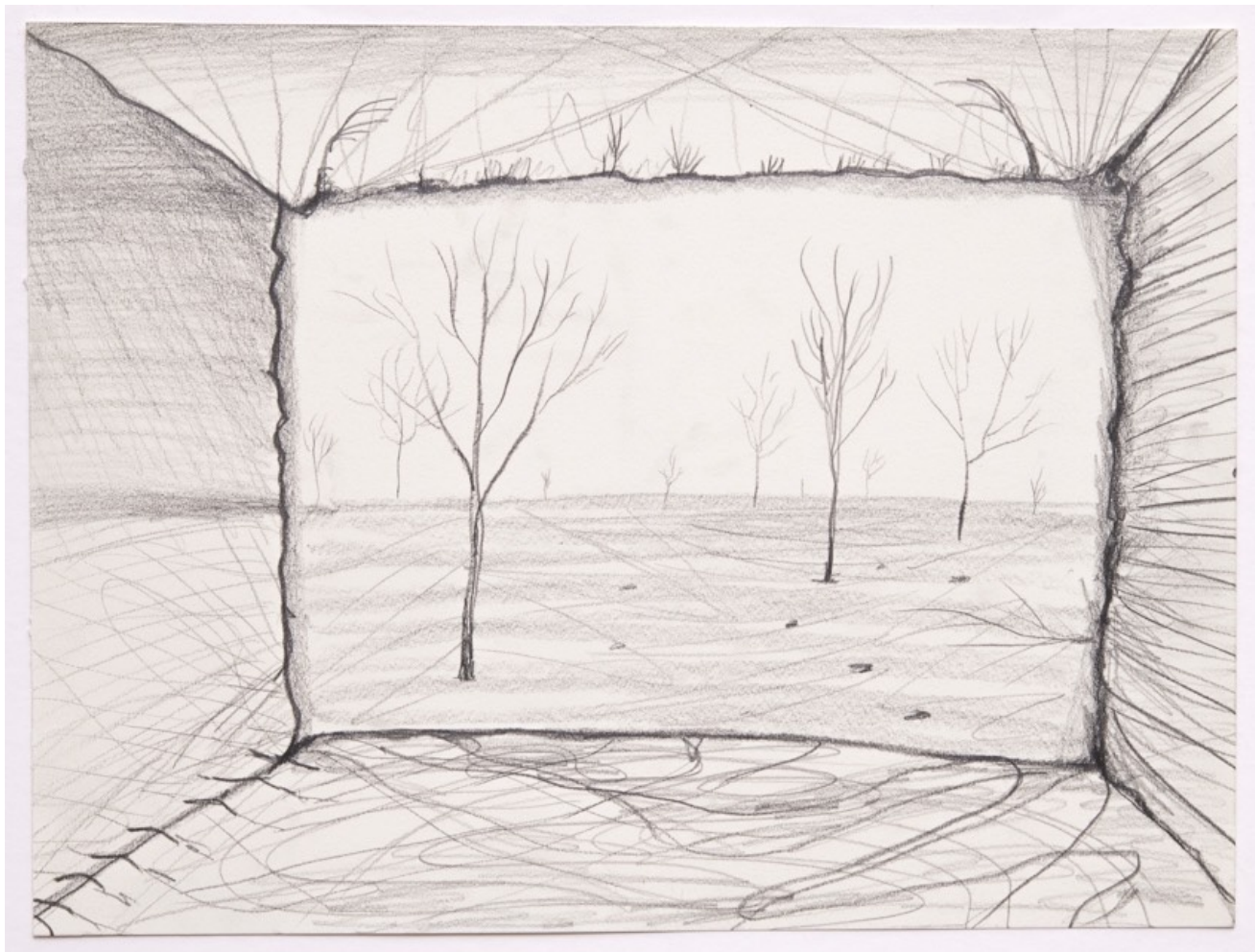
graphite on paper

9 x 12 inches

\$500



Annabel Osberg
Turning Away 2023
prismacolor on paper
9 x 12 inches
\$500



Annabel Osberg

Untitled (Tree Crypt Study) 2023

graphite on paper

9 x 12 inches

\$500



Annabel Osberg

Bark Study 2024

ink on paper

12 x 9 inches

\$500



Annabel Osberg
Flame Curtain 2024
prismacolor on paper
9 x 12 inches
\$500



Annabel Osberg

Opening 2024

graphite and prismacolor on paper

12 x 9 inches

\$500



Annabel Osberg

The Interminable Wait 2024

prismacolor on paper

12 x 9 inches

\$500



Annabel Osberg

Untitled (cracked) 2024

graphite on paper

12 x 9 inches

\$500



Annabel Osberg

Untitled (hooked) 2024

graphite on paper

12 x 9 inches

\$500



Annabel Osberg

Untitled (stacked landscape figure study) 2024

prismacolor on paper

12 x 9 inches

\$500



Annabel Osberg

Study for Uprooted 2023

prismacolor on paper

12 x 9 inches

\$500



Annabel Osberg

Web 2024

graphite on paper

12 x 9 inches

\$500