

*Annabel Osberg*

*Future Fair NYC May 1 - 4, 2024*

Drawing is the foundation of my artistic practice. Nearly all of my paintings originate in my sketchbooks. Pencil or pen on paper is my rawest way of processing the world around me, almost like a diary. I sketch nearly every day—sometimes from life; other times, from memory; often, I doodle whatever comes to mind, à la Surrealist automatism.

The 25 pieces here were selected from copious stacks of drawing pads I've filled over the past several years. A few of these, including my "Study for 'Uprooted,'" were ideas for paintings that have already been executed; others might eventually end up in some form on future canvases. Many of them straightforwardly crystallize memories, dreams, or things I've seen, such as a total solar eclipse or a mountain near my house. All offer intimate glimpses into my mind and artistic process.



Annabel Osberg is an artist and critic based in Southern California. Her art addresses the surreality of life in the digital era, posing existential questions about what it means to be human in a world increasingly defined by advanced technology. With shallow, disjunctive spatiality and luminous hues, her paintings often evoke vacuous onscreen realms populated by sundered hybrids of flesh, blood, and nature. Her work has been included in recent exhibitions at the University of La Verne and Ladies' Room in Los Angeles; and in July will be shown at Serious Topics.

In addition to her studio practice, Osberg regularly contributes to Artforum; and has penned hundreds of articles about art and culture for other publications including Art in America, the Financial Times; The Huffington Post; The Brooklyn Rail; AEQAI; and Artillery, where she served as an editor and weekly columnist. She has also authored numerous monographs and catalog essays.

Osberg graduated summa cum laude from California State University, San Bernardino with a BA in studio art, attended Yale, and received her MFA in painting from Boston University.



**Annabel Osberg**

*Untitled (Cloud Study 1)* 2014  
graphite and prismacolor on paper  
9 x 12 inches

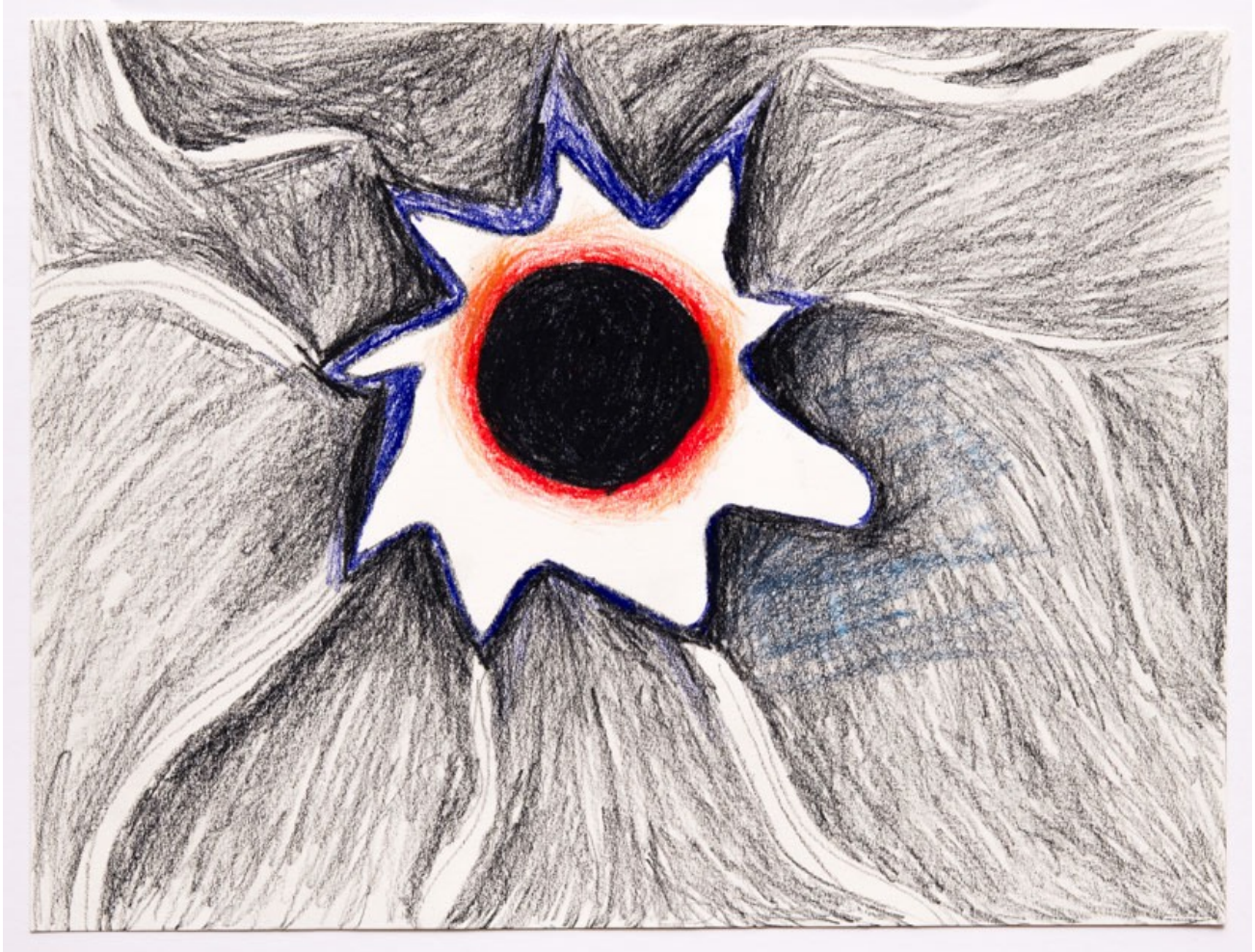


**Annabel Osberg**

*Seascape Study* 2017

graphite and prismacolor on paper

9 x 12 inches



**Annabel Osberg**

*Totality Solar Eclipse Caspar WY 2017*

graphite and prismacolor on paper

9 x 12 inches



**Annabel Osberg**

*Flaming Hands* 2019

graphite and prismacolor on paper

9 x 12 inches



**Annabel Osberg**

*Headfans 2019*

graphite on paper

9 x 12 inches



**Annabel Osberg**

*Injury at My 5th Birthday Party 2019*

graphite on paper

9 x 12 inches



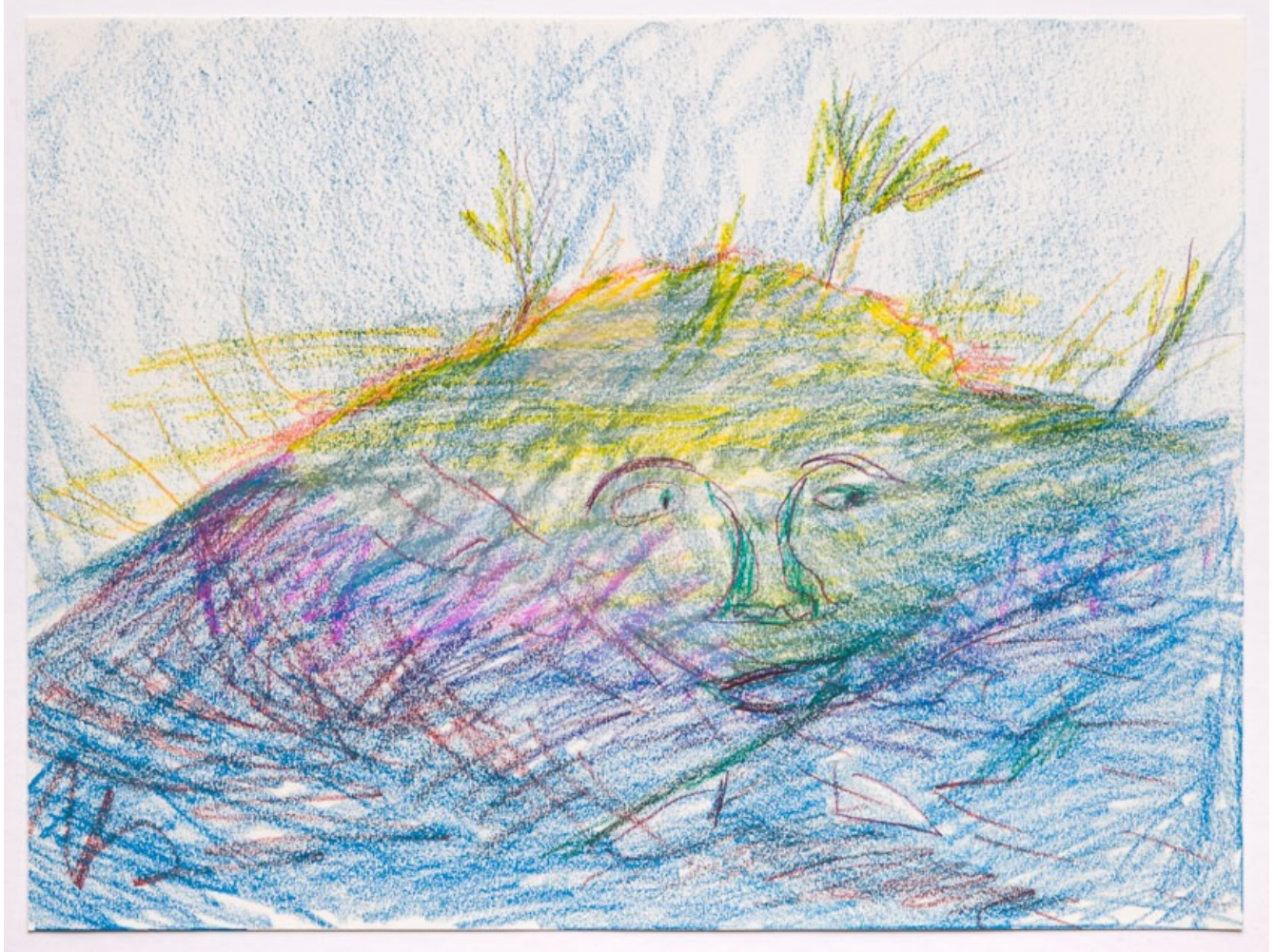
**Annabel Osberg**

*Landface* 2019

graphite and prismacolor on paper

9 x 12 inches





**Annabel Osberg**

*Mountainface* 2019

graphite and prismacolor on paper

9 x 12 inches



**Annabel Osberg**

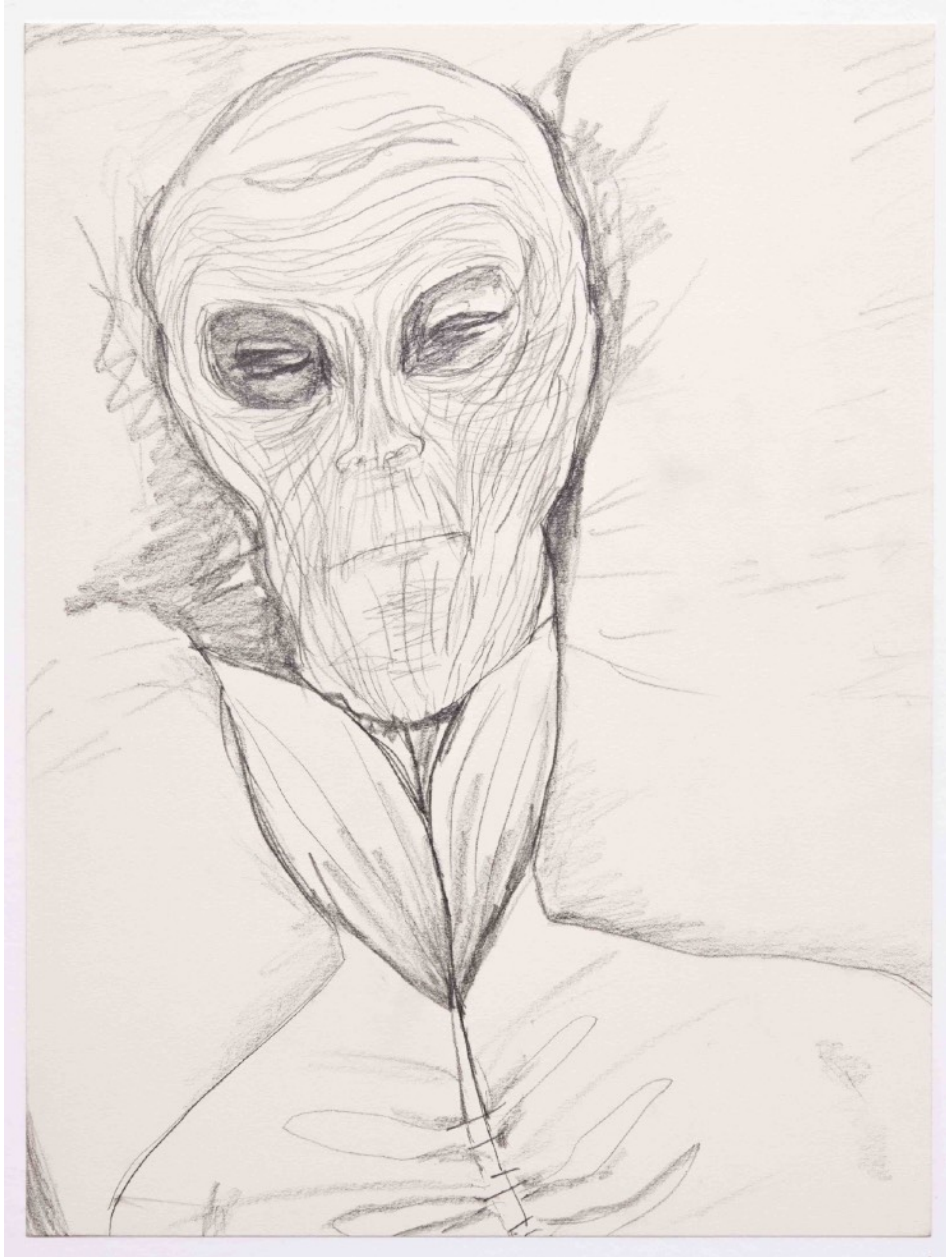
*Untitled (Spike Study) 2014*

graphite and prismacolor on paper

9 x 12 inches



**Annabel Osberg**  
*Sunny Peak 2020*  
prismacolor on paper  
9 x 12 inches



**Annabel Osberg**

*Bud 2021*

graphite on paper

12 x 9 inches



**Annabel Osberg**

*Untitled (divided desert) 2021*

graphite and prismacolor on paper

9 x 12 inches

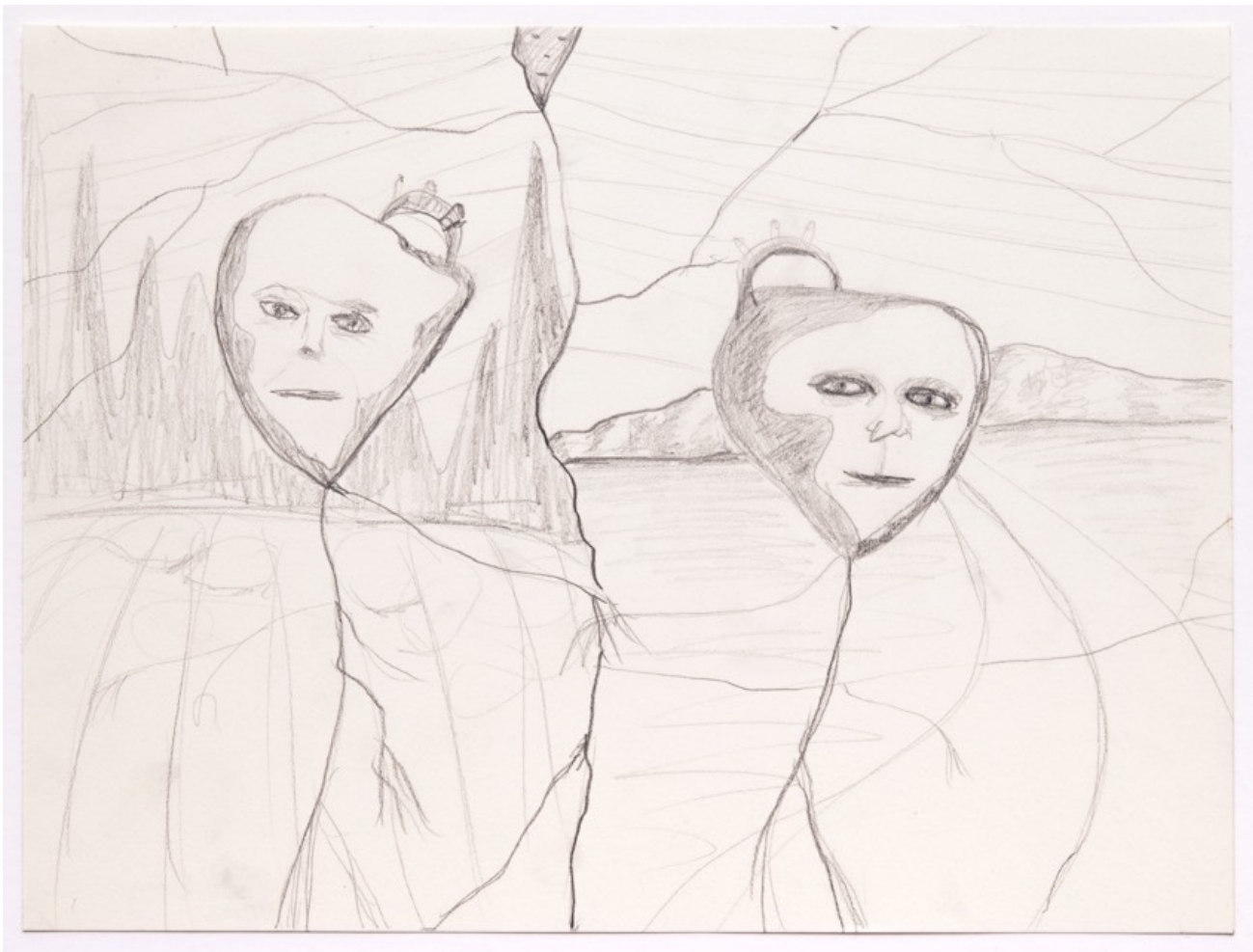


**Annabel Osberg**

*Untitled (Starry Evening)* 2021

prismacolor on paper

9 x 12 inches



**Annabel Osberg**

*Together Apart 2023*

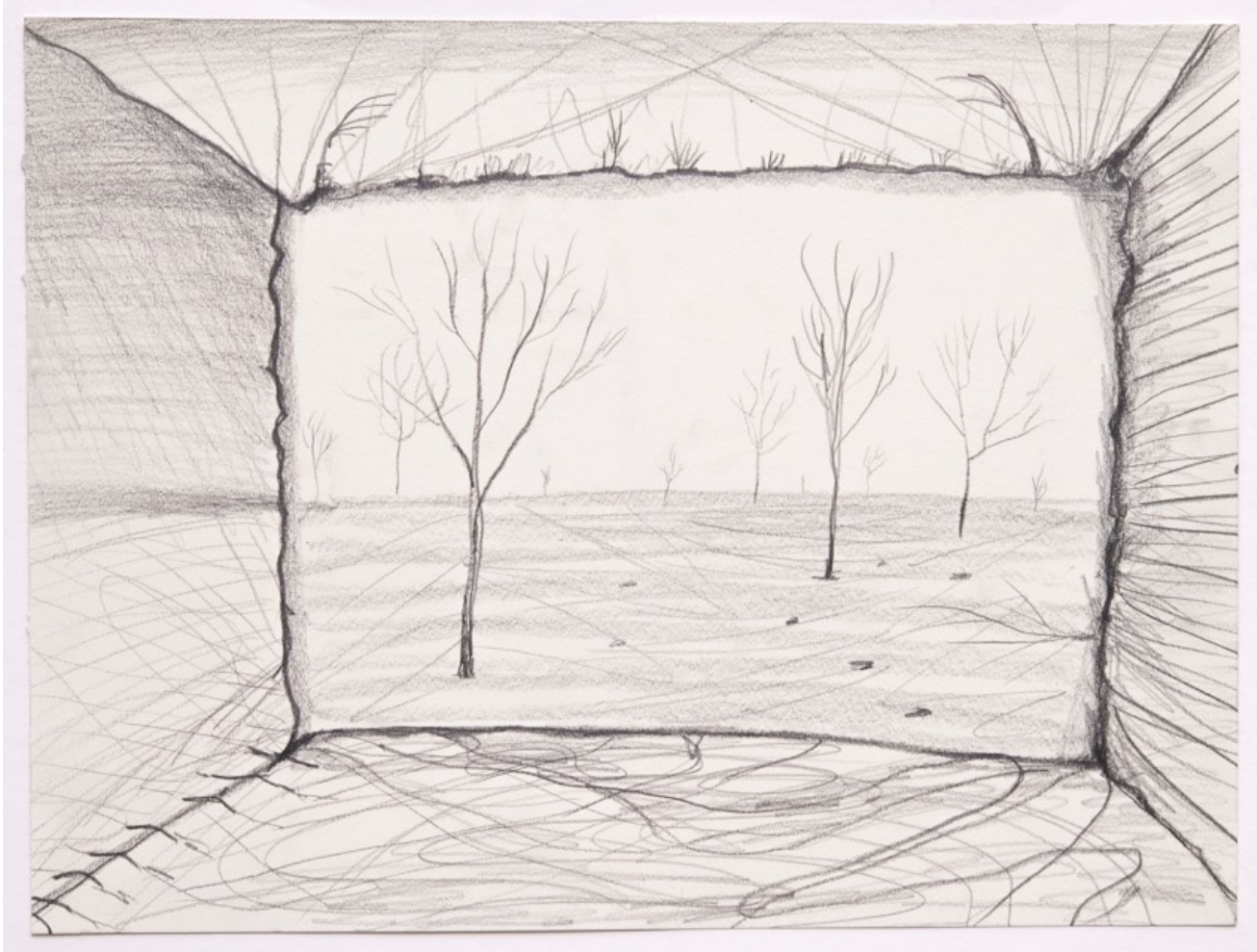
graphite on paper

9 x 12 inches



**Annabel Osberg**  
*Turning Away 2023*  
prismacolor on paper  
9 x 12 inches





**Annabel Osberg**

*Untitled (Tree Crypt Study) 2023*

graphite on paper

9 x 12 inches



**Annabel Osberg**

*Bark Study 2024*

ink on paper

12 x 9 inches



**Annabel Osberg**  
*Flame Curtain* 2024  
prismacolor on paper  
9 x 12 inches



**Annabel Osberg**

*Opening 2024*

graphite and prismacolor on paper

12 x 9 inches

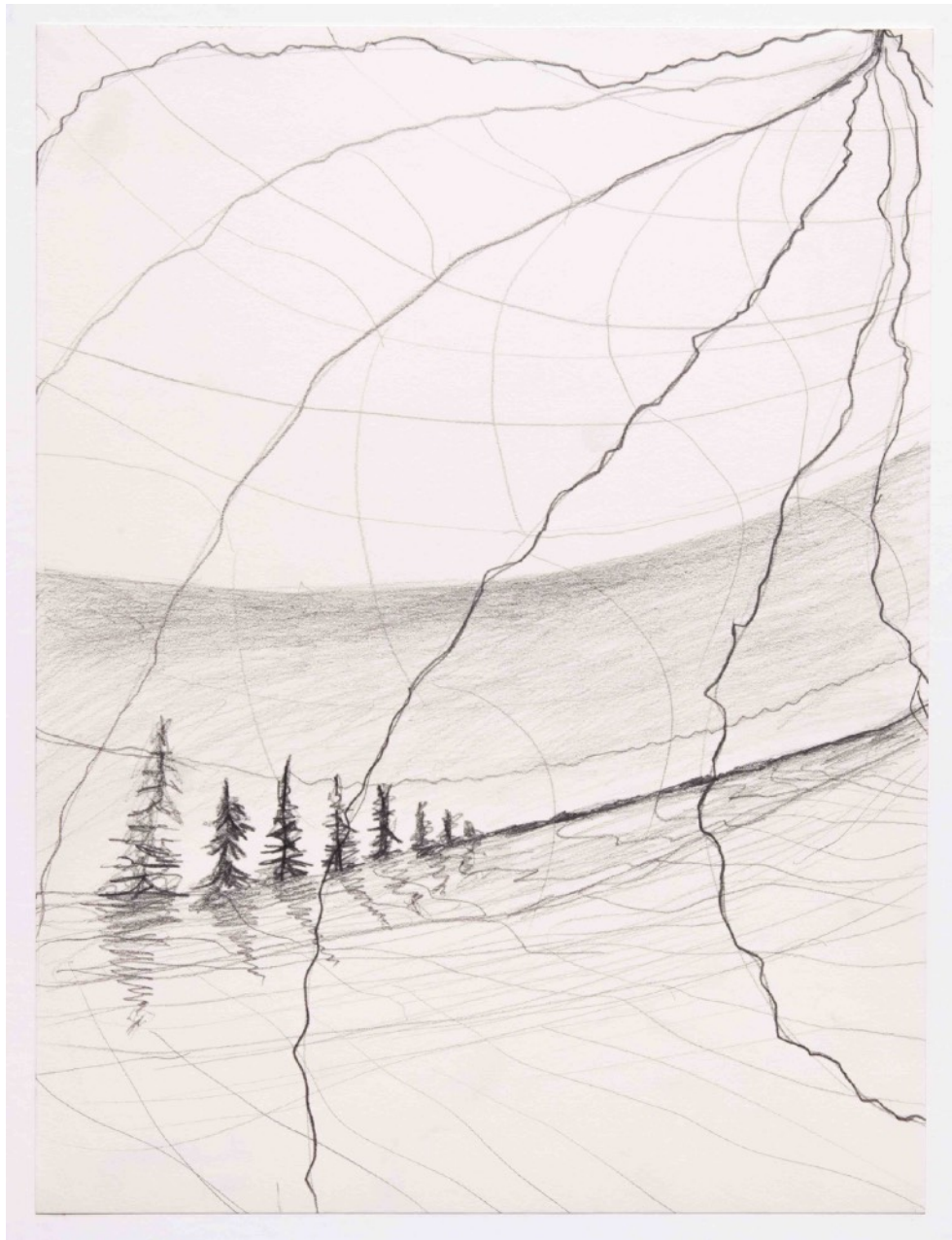


**Annabel Osberg**

*The Interminable Wait* 2024

prismacolor on paper

12 x 9 inches



**Annabel Osberg**

*Untitled (cracked) 2024*

graphite on paper

12 x 9 inches



**Annabel Osberg**

*Untitled (hooked) 2024*

graphite on paper

12 x 9 inches



**Annabel Osberg**

*Untitled (stacked landscape figure study) 2024*

prismacolor on paper

12 x 9 inches



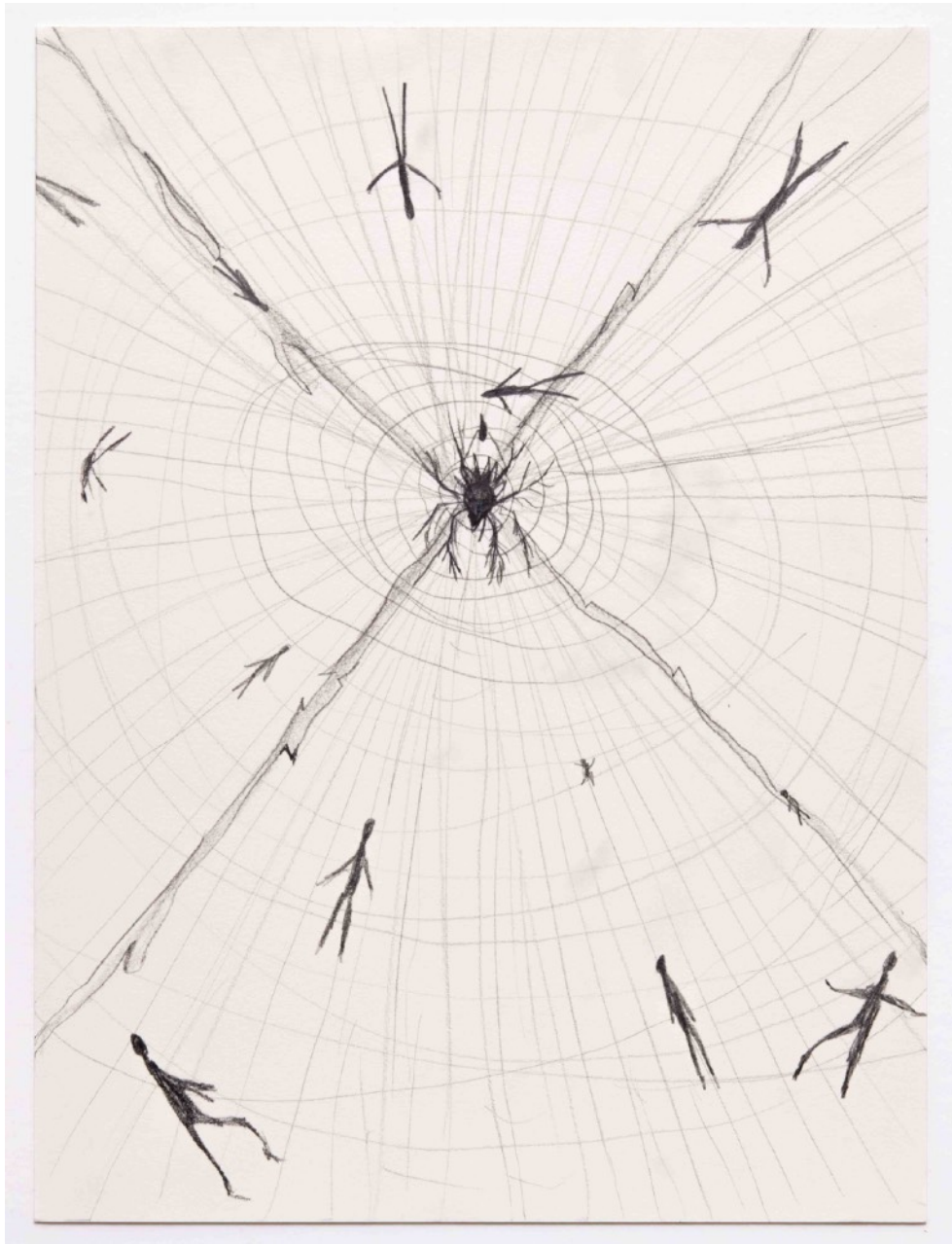


**Annabel Osberg**

*Study for Uprooted 2023*

prismacolor on paper

12 x 9 inches



**Annabel Osberg**

*Web* 2024

graphite on paper

12 x 9 inches