

Anne Harris

Future Fair NYC May 1 - 4, 2024



Anne drinking wine in Madrid, photo: Paul D'Amato

I've made so many drawings over the years. Most live in my flat files, never seen except by me when I poke around in a drawer. They're like thoughts I don't say out loud, but mull over every now and then. Some have a purpose, some I make because I love to draw. Usually, I draw from life and I draw from art.

The ink drawings were made from Rubens (The Great Last Judgement and The Worship of Venus). The colored pencil and graphite drawings are from life, from me, looking in a mirror--part of a large group of drawings called How to Draw Yourself Out of a Hole.

Anne Harris has exhibited her paintings and drawings at venues ranging from Alexandre Gallery (NYC), DC Moore Gallery (NYC), and Goldfinch Gallery (Chicago), to the National Portrait Gallery at the Smithsonian Institute, The Portland Museum of Art, the California Center for Contemporary Art and the North Dakota Museum of Art. Her work is in such public collections as The Fogg Museum, The Yale University Art Gallery, The New York Public Library and The DeCordova Museum and Sculpture Garden. Grants and awards received include a Guggenheim Foundation Fellowship and an NEA Individual Artists Fellowship. She is also the originator of The Mind's I, a drawing project done with other artists which has traveled and exhibited nationally and internationally, including Dalton Warehouse in Los Angeles and Espacio Andrea Brunson in Santiago, Chile.



Anne Harris

How to Draw Yourself Out of a Hole 2006

colored pencil on gray paper

11 x 10 inches



Anne Harris

How to Draw Yourself Out of a Hole 2006

colored pencil on yellow paper

11 x 10 inches

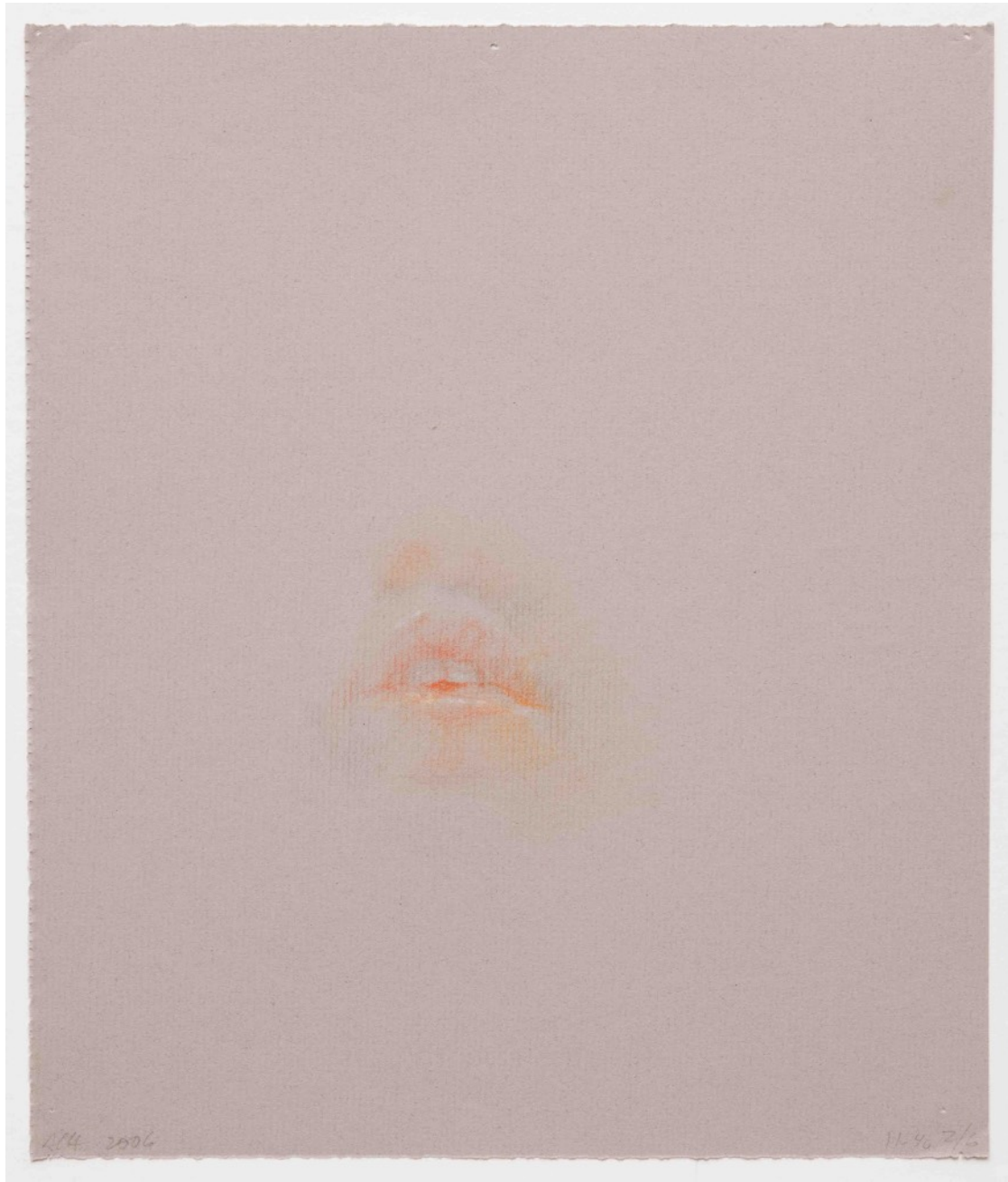


Anne Harris

How to Draw Yourself Out of a Hole 2006

colored pencil on yellow paper

11 x 10 inches

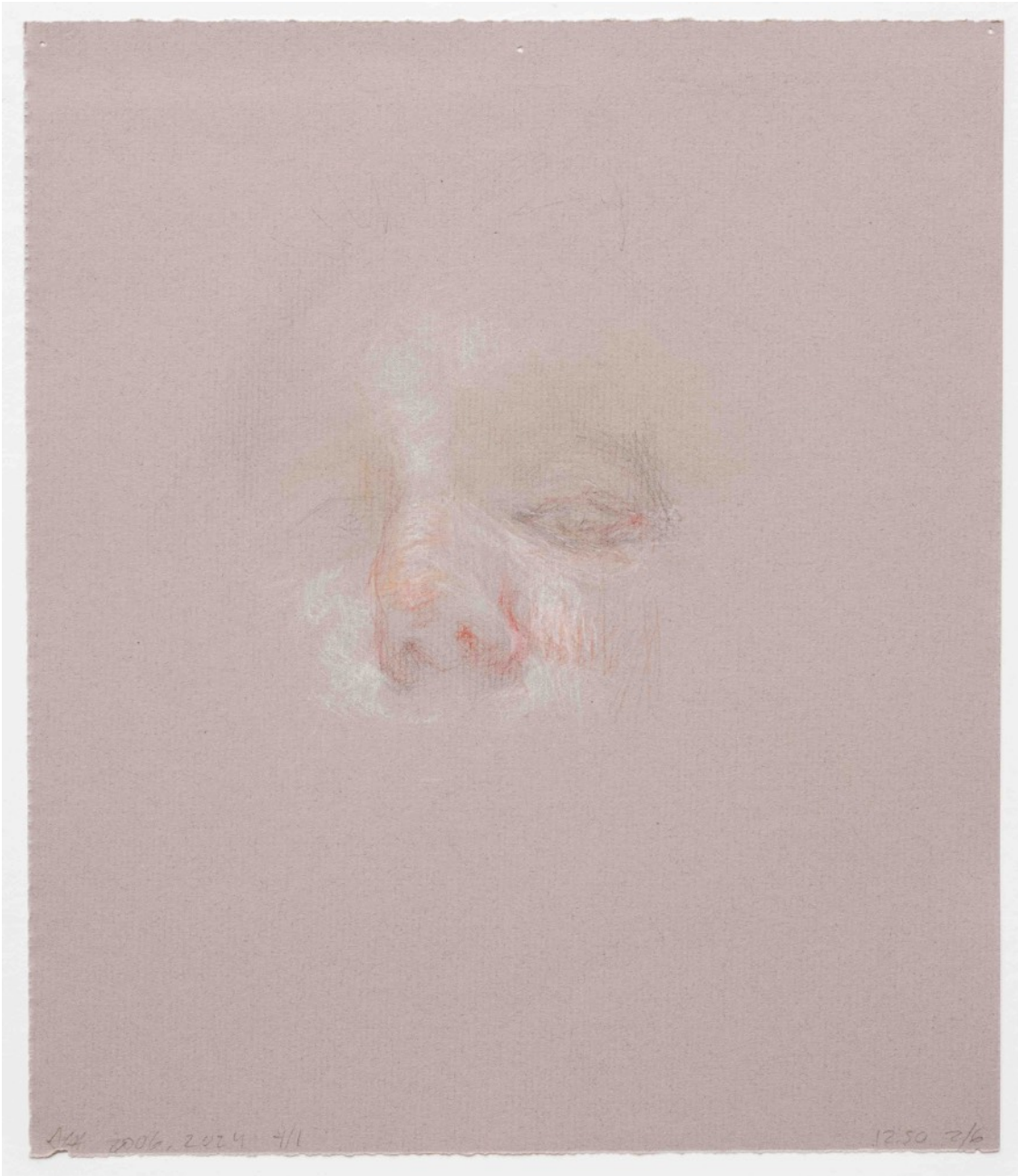


Anne Harris

How to Draw Yourself Out of a Hole 2006

colored pencil on gray paper

11 x 10 inches



Anne Harris

How to Draw Yourself Out of a Hole 2006

colored pencil on gray paper

11 x 10 inches



Anne Harris
Study (Rubens) 2015
ink on paper
10.5 x 3 inches



Anne Harris

Study (Rubens) 2015

ink wash and colored pencil on paper

11.5 x 10 inches



Anne Harris

Study (Rubens) 2015

ink wash on paper

11 x 10 inches



Anne Harris

Study (Rubens) 2015

ink wash on paper

10 x 11.5 inches